



Zigbee Adjustable body sensing switch

<http://www.livolo.com>

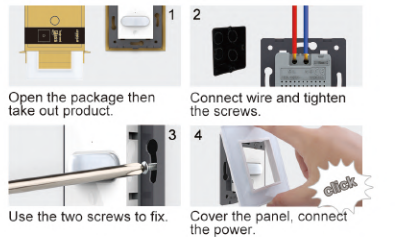
WARNING:

- 1.The electric current should be off during installation.
- 2.Wiring should be done in strict accordance to the wiring diagrams.
- 3.This product should not connected with load.
- 4.When the environment temperature is close to the human body temperature, the detection sensitivity of the human body sensor will be affected. To ensure the user experience, please do not use it in an area exceeding 35°C. There must be no other objects between the product and the detected human activity range while

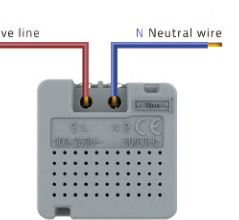
the product is installed.

- 5.The sensor probe should not directly face doors, windows, and places exposed to direct sunlight while the product is installing. And keep away from air conditioning, refrigerators, stoves and other areas of air temperature change sensitivity. The wall to be installed shall be sturdy and free from shaking or vibration.

Installation Diagram:



The Wiring Diagram:



Product Function:

There is about 40 seconds of initialization time when the product is first powered on. The LED light will turns red when person is detected.And it will turns blue when nobody has been detected. It can be used as a condition of the automation rules in the APP when the configuration successful.

Remark:

Usually, if the switch does not work properly, please turn off the power and recover it after 1 minute.



The LED light will turns red when person is detected

It will turns blue when nobody has been detected

Technical Parameters:

No.	Technical index	Requirements
1	Dimension	45mm*45mm*35mm
2	Voltage	Neutral line and live line power supply 100VAC~250VAC 50Hz~60Hz
3	Function	Induction distance: 0.5 ~5m Delay time: 15 ~200s
4	Status indication	Two-color LED light + buzzer
5	Operation environment	-10°C~ + 35°C 0~90%RH

No.	Technical index	Requirements
6	Zigbee communication protocol	Zigbee ZHA
7	Flame retardant enclosure	Yes
8	Surface	Mill Finish

ZigBee Switch and gateway synchronization

Scan the QR code to download the LIVOLO APP



ANDROID APP
DOWNLOAD



IOS APP
DOWNLOAD

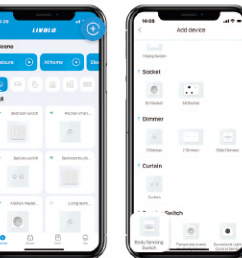
Configuration Instructions:

Step 1:

Please complete the gateway network configuration before proceeding with the network configuration. Please refer to gateway manual for details.

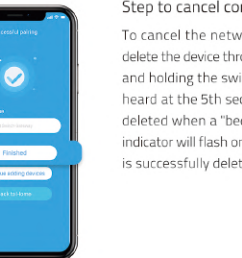
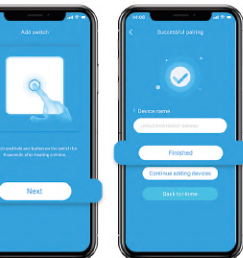
Step 2:

Open the the "Device" page of Livolo APP,click the "+" button in the upper right corner and select the "Body Sensing Switch" device.



Step 3:

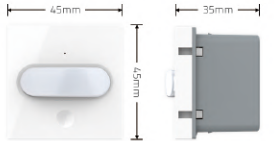
Press and hold the button for 5s according to the guide of the APP. When the buzzer emit "beep", the indicator light flashes red and blue alternately,click the "Next" on the APP. Wait until the pairing process bar reaches 100% and click after completing the naming "Finished" successfully paired the switch.



Step to cancel configuration mode:

To cancel the network configuration,you can delete the device through the App, or by pressing and holding the switch for 10s, a "beep" will be heard at the 5th second,and the device will be deleted when a "beep" at the 10th second.the indicator will flash once every 3s after the device is successfully deleted.

Product Dimension:



Range of application:

