



## ZigBee socket

<http://www.livolo.com>

### Product Functions Description

The ZigBee socket can be controlled by the LIVOLO APP, and scene control is available.

When the ZigBee socket is powered on for the first time, it automatically enters the matching network status, the indicator light flashes blue, and the indicator light will be steady blue after the matching. Touch the power button to control the socket to turn on/off. The power is on when the indicator light is red, and the power is off when the indicator is blue. If the network is disconnected, the signal indicator

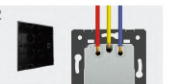
will flash at intervals of three seconds. Touch the power button for 10 seconds to unbind, and rematch.



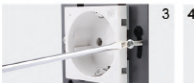
### Installation Diagram



1 Open the package then take out product.



2 Connect wire and tighten the screws.

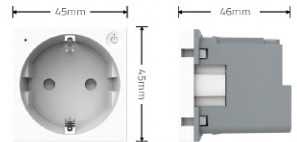


3 Use the two screws to fix.



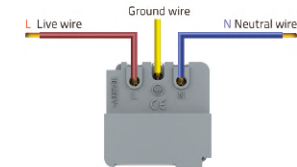
4 Cover the panel, connect the power.

### Specifications



### The Wiring Diagram

Please make sure the gateway is within the router (2.4G) signal range when installation.



### Product Specifications

No.	TECHNICAL INDEX	REQUIREMENTS
1	Rated current and voltage	100-250V 50/60Hz 16A
2	communication protocol	Zigbee ZHA
3	Communication distance	Indoor 10m, open space 20m
4	Zero-crossing drive	Yes
5	Power failure recovery	Yes
6	Protection standard	IP20
7	Life time of on/off	50000 times

No.	TECHNICAL INDEX	REQUIREMENTS
8	Rated power	16A
9	Child safety door	Yes
10	Flameproof enclosure	Yes

## ZigBee Switch and gateway synchronization

Scan the QR code to download the LIVOLO APP



ANDROID APP  
DOWNLOAD



IOS APP  
DOWNLOAD

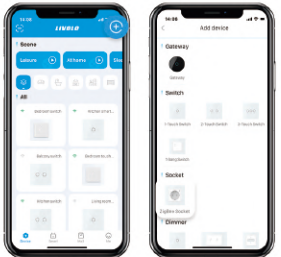
## Configuration Instructions:

Step 1:

Please complete the gateway network configuration before proceeding with the network configuration. Please refer to gateway manual for details.

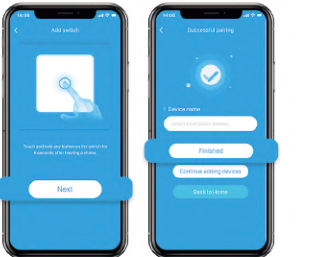
Step 2:

Open the the "Device" page of Livolo APP,click the "+" button in the upper right corner and select the "ZigBee socket" device.



Step 3:

Press and hold the button for 5s according to the guide of the APP. The indicator light flashes red and blue alternately, click the "Next" on the APP. Wait until the pairing process bar reaches 100% and click after completing the naming "Finished" successfully paired the switch.



Step to cancel configuration mode:

To cancel the network configuration,you can delete the device through the App, or by pressing and holding the switch for 10s. The indicator will flash at the 5th second and the device will be deleted when indicator flash again at the 10th second. The indicator will flash once every 3s after the device is successfully deleted.

## Range of application:

A8:



C9:



B6:



C7:

