



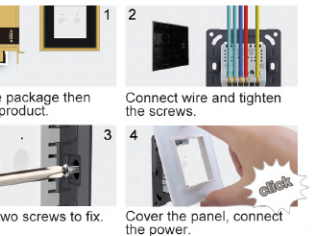
Instruction for 2 gang WiFi Function Key (1&2 way with neutral&live line)

<http://www.livolo.com>

Installation Precautions

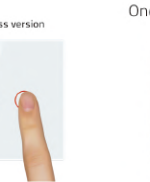
1. Never install with power on.
2. Wiring must be performed in accordance with wiring requirements.
3. The load of the switch for each gang cannot exceed 5A.
4. The size of the installation screw hole is 60mm, and the diameter of mounting box should be at least 72mm, and the depth of mounting box is 65mm.

Installation Diagram:



Basic Functions

When the switch is turned on, the indicator light is red, and when it's turned off, the indicator light is blue. When the WiFi signal is weak or disconnected from the router, the red indicator light flashes every 3 seconds, for example: when the switch is turned on, the red indicator light is always on, and changes to the blue indicator light every 3 seconds, when the switch is off, the blue indicator light is always on, and the changes to red indicator light every 3 seconds.



Wiring Instructions

One Way Switch:



Two Way Switch (Intermediate Switch):



Diagram 1

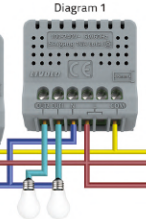


Diagram 3



Product Specifications

No.	Technical Parameters	Requirements
1	Dimension	45.1mm*45.1mm*42.6mm (Function module) 46.5mm*46.5mm*36.75mm (Glass panel)
2	Voltage	100-240V~ 50/60Hz
3	Status indication	Two-color LED light + Buzzer
4	Load	5A/1 gang, total no more than 10A

Product Specifications

No.	Technical Parameters	Requirements
5	Temperature and humidity	-10°C - + 40°C
6	WiFi communication protocol	IEEE802.11 b/g/n protocol TCP/IP protocol stack
7	Two way function	✓
8	Flame retardant shell	✓
9	Longevity	40,000 times

Product Specifications

No.	Technical Parameters	Requirements
5	Temperature and humidity	-10°C - + 40°C
6	WiFi communication protocol	IEEE802.11 b/g/n protocol TCP/IP protocol stack
7	Two way function	✓
8	Flame retardant shell	✓
9	Longevity	40,000 times

Product Specifications

No.	Technical Parameters	Requirements
5	Temperature and humidity	-10°C - + 40°C
6	WiFi communication protocol	IEEE802.11 b/g/n protocol TCP/IP protocol stack
7	Two way function	✓
8	Flame retardant shell	✓
9	Longevity	40,000 times

Download the LIVOLO APP

Scan the QR code



ANDROID APP
DOWNLOAD

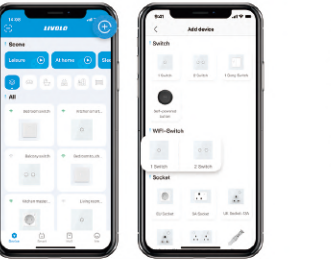


IOS APP
DOWNLOAD

WiFi Switch Paring

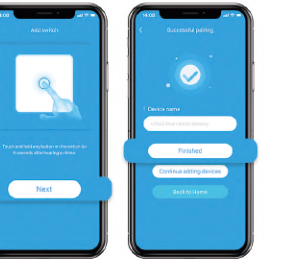
Step 1:

Open the LIVOLO APP in the "Device" page, click the upper right corner of the "+" button, select the "WiFi Switch" device according to the gangs of the switch.



Step 2:

Follow the guide of the app, long press the switch touch button for 3S, when hearing a beep, the indicator light flashes red and blue alternately. Click "Next" on the APP, wait for the pairing progress bar to reach 100%, click "Finished" after naming the WiFi Switch. The switch is successfully paired.



Two Way Control Paring Instruction

Step 1:

Long press the switch button that needs to be paired for 5 seconds, the 3S will make a beep, and the 5S will make a second beep or the indicator light flashes. Release your finger and the switch is in the two way control pairing state.

Step 2:

Press the button that needs to be paired on the other switch to complete the pairing, and the indicator will flash when it's finished.

DE-pairing instructions:

To cancel the WiFi pairing, you can delete the device through the APP, or long press the switch for 10S, the 3S will make a beep, the 5S will make a second beep, until the 10S will make the third beep to delete the device. After the device is successfully deleted, the backlight indicator flashes for every 3 seconds.

Attention!

Long press for 10 seconds to cancel the WiFi pairing and the two way control pairing together. If you only need to reconfigure the WiFi, long press for 3 seconds to enter the WiFi pairing mode.

Noted

- 1.If the WiFi switch doesn't work well, please switch off the power for 1 minute, and then switch it on again.
- 2.During the pairing, the device and the mobile app need to be connected to the same router.
- 3.If you change the router, you need to re-configure the network and bind the device to control it through the mobile app.

Product Size

C9:

78.00mm

119.00mm

85.00mm

8.00mm

41.00mm

33.00mm

A8:

88.00mm

130.00mm

83.00mm

8.00mm

41.00mm

33.00mm

B6:

86.00mm

96.00mm

80.00mm

8.00mm

41.00mm

33.00mm

C7:

80.00mm

80.00mm

80.00mm

8.00mm

41.00mm

33.00mm